



RI SERIES GENERAL PURPOSE INLINE EXHAUST FANS

- Engineered to provide effective and reliable operation making it perfect for general purpose inline ventilation. Low profile construction for ease of installation in confined spaces.
- Built with a well balanced air over motor impeller assembly, and a backward inclined wheel for smooth quiet operation.
- High efficiency motor. Available for 4", 5", 6" and 8" duct sizes.
- Fan housing constructed of heavy gauge satin coat steel with baked enamel finish.
- Suitable for use in high-rise condominium, office buildings, schools, boardrooms or where high volume quiet ventilation is required.
- The models RI-150, RI-200 & RI-250 meet Washington State Ventilation and Indoor Air Quality Code.

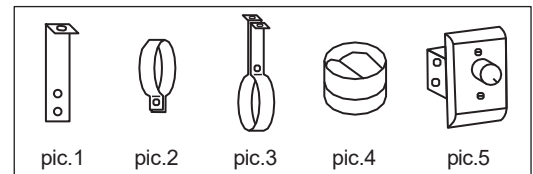
ACCESSORIES

Standard:

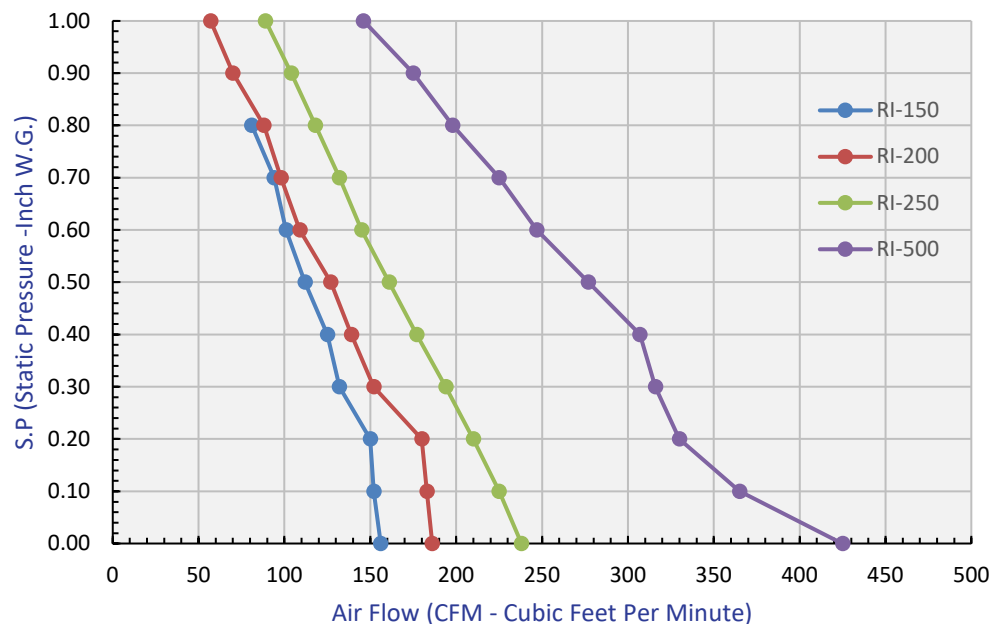
- Mounting brackets for wall or truss mounting (pic.1)

Optional:

- Mounting clamps for use with rigid duct, complete with foam rubber insulation (pic.2)
- Suspension bracket (pic.3) Backdraft damper with butterfly valve to prevent cold air from entering when fan is not in use (pic.4)
- Speed Controller (pic.5)



RI SERIES FAN DATA



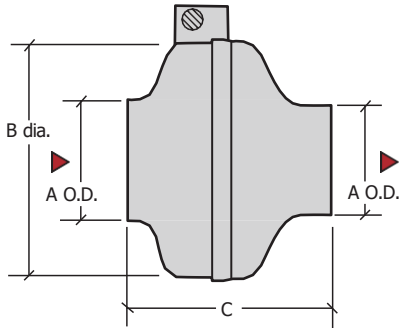
HVI CERTIFIED RATING

MODEL	RI-150	RI-200	RI-250	RI-500
CFM @0.20" S.P.	150	180	210	330

Reversomatic Manufacturing Ltd.

790 Rowntree Dairy Road, Woodbridge, ON Canada L4L 5V3 • Tel: 905-851-6701 • Fax: 905-851-8376
www.reversomatic.com • info@reversomatic.com

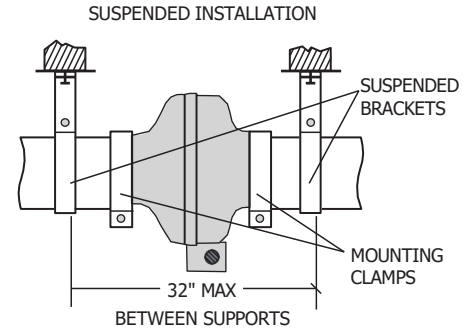
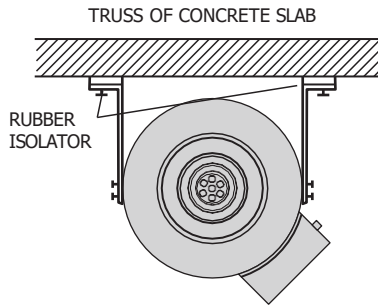
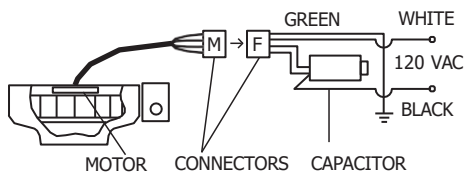
RI-150, RI-200, RI-250, RI-500



FAN SIZE

MODEL	RI-150	RI-200	RI-250	RI-500
A	3-7/8"	4-7/8"	5-7/8"	7-7/8"
B	9-1/2"			13"
C	8"			10"

ELECTRICAL CONNECTION



FAN MOTOR

MODEL	RI-150	RI-200	RI-250	RI-500
Watts	85	55	85	115
RPM	2550	2650	2550	2550
Capacitor (MFD)	8	6	8	10
Amp	0.8	0.45	0.8	1
Sound (Sones)	2.2	2.5	2.7	3.8

PERFORMANCE CHART

MODEL	CUBIC FEET PER MINUTE AT STATIC PRESSURE										
	0	0.1	0.2	0.3	0.4	0.5	0.6	0.7	0.8	0.9	1
RI-150	156	152	150	132	125	112	101	94	88	-	-
RI-200	186	183	180	152	139	127	109	95	81	70	57
RI-250	241	225	210	194	177	161	145	132	118	104	89
RI-500	457	345	330	340	307	277	247	225	198	175	146

RPM (Revolution Per Minute) shown is nominal and performance is based on actual speed of test. Unit was tested with inlet cone, backdraft damper and outlet duct.

Contractor:	RI SERIES		
Architect:	Job:	Date	Supersedes
Engineer:	Date Submitted:	2022-06-02	Drawing NO.

Reversomatic Manufacturing Ltd.

790 Rowntree Dairy Road, Woodbridge, ON Canada L4L 5V3 • Tel: 905-851-6701 • Fax: 905-851-8376
www.reversomatic.com • info@reversomatic.com