



## GENERAL PURPOSE INLINE EXHAUST FANS

# RI SERIES

Model:

## RI-150C/200C/250C

## RI-500C/700C/900C

- Self cleaning, non overloading wheel
- Engineered for quiet continuous operation making it perfect for general purpose ventilation
- Low profile construction simplifies installation in those tight spaces
- Built with a well balanced backward-curved motor impeller assembly that matches well with the housing to maximize airflow, efficiency and minimize the noise level
- Formed and tooled by quality deep-stretch cold rolling steel
- Suitable for use in high-rise condominium, office buildings, schools, boardrooms or where high volume quiet ventilation is required
- Available for 4", 5", 6", 8" 10" and 12" duct sizes
- Mounting brackets are included

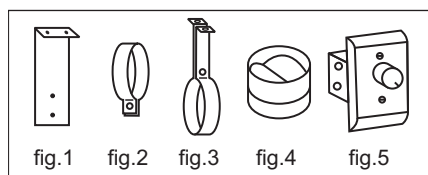
### ACCESSORIES

#### Standard:

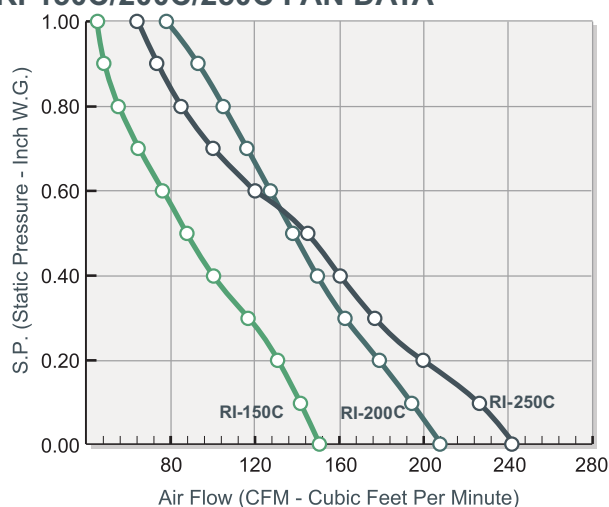
- Mounting brackets (fig.1)
- Rubber Isolator
- M6 Steel Expansion Bolt

#### Optional:

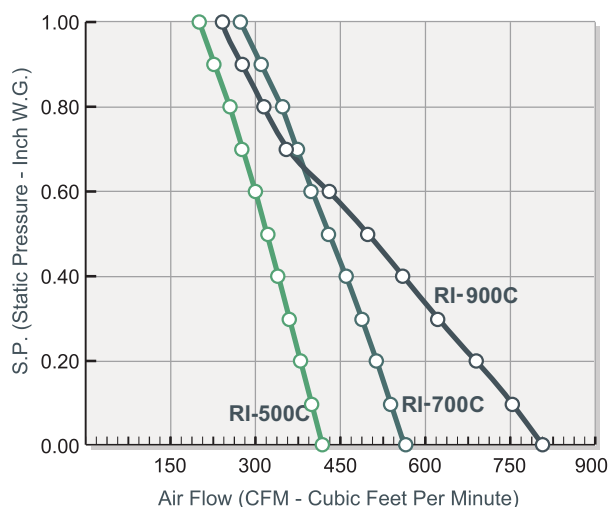
- Mounting clamps (fig.2)
- Suspension bracket (fig.3)
- Backdraft damper with butterfly valve (fig.4)
- Speed Control (fig.5)



### RI-150C/200C/250C FAN DATA



### RI-500C/700C/900C FAN DATA

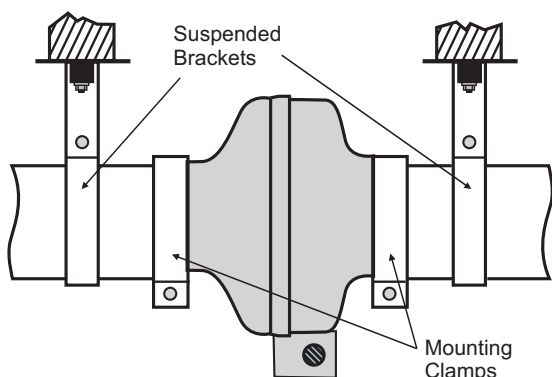


by:  
Air Specialties Ltd.  
1.866.890.6457  
1.800.810.3473

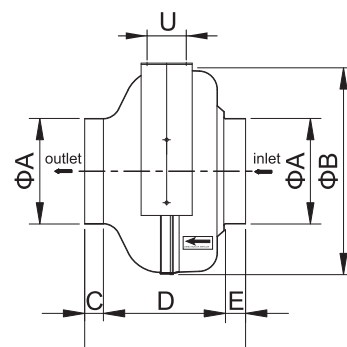
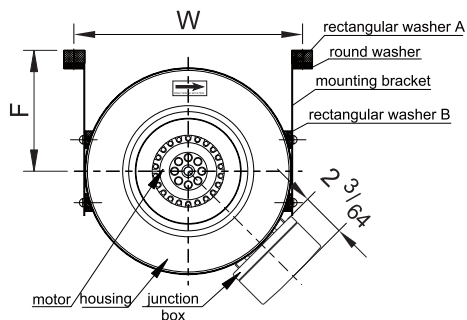




## INSTALLATION



### Major Dimensions

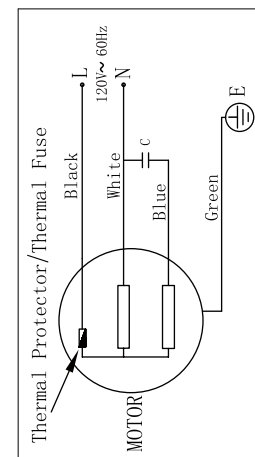


## DIMENSION

unit: inches

Model	ΦA	ΦB	C	D	E	F	W	U	impeller diameter
RI-150C	4	9 17/32	15/32 ~ 45/64	6 17/32	3/4 ~ 1 1/8	5 25/64	10 35/64	1 37/64	Φ5 23/32
RI-200C	5	9 17/32	11/16 ~ 1 1/32	6 17/64	3/4 ~ 1 1/8	5 25/64	10 35/64	1 37/64	Φ6 7/64
RI-250C	6	10 5/8	5/8 ~ 15/16	6 1/8	3/4 ~ 1 1/8	6 7/64	11 21/32	1 37/64	Φ6 57/64
RI-500C	8	13 35/64	59/64 ~ 1 3/8	6 63/64	3/4 ~ 1 1/8	7 7/8	14 9/16	2 23/64	Φ7 31/64
RI-700C	10	13 35/64	59/64 ~ 1 3/8	6 49/64	27/32 ~ 1 9/32	7 7/8	14 9/16	2 23/64	Φ9 17/32
RI-900C	12	15 45/64	11/16 ~ 1 1/32	7 63/64	27/32 ~ 1 9/32	9 1/4	16 47/64	2 23/64	Φ9 59/64

## WIRING DIAGRAM



## PERFORMANCE (CFM)

MODEL	MOTOR 120 VAC 60 Hz				CUBIC FEET PER MINUTE										HVI Ratings @ 0.20" S.P.	
	RPM	AMPS	WATTS	SONES	S.P.	0	0.2	0.4	0.6	0.8	1.0	1.5	2.2	2.5		
RI-150C(DJT10-25H)	2993	0.26	28.9	2.3	CFM	152	126	96	70	33						120
RI-200C(DJT12-35H)	2593	0.45	53.4	2.7	CFM	202	167	133	107	81	52					160
RI-250C(DJT15-46H)	2525	0.42	47.7	3.2	CFM	238	199	155	119	85	44					190
RI-500C(DJT20-56H)	3168	0.79	90.3	4.1	CFM	425	383	345	303	259	220	110				380
RI-700C(DJT25-66H)	2856	0.99	117.9	5.0	CFM	566	513	457	396	333	274	139				510
RI-900C(DJT30-66J)	2612	1.27	151	4.6	CFM	767	682	566	413	299	238	173	53	30		680

RPM (Revolution Per Minute) shown is nominal and performance is based on actual speed of test.