



## Mixed-flow Inline Fans

### Installation Manual

- \*RMF – 4 (HF-100PE)
- \*RMF – 5 (HF-125PE)
- \*RMF – 6 (HF-150PE)
- RMF – 8 (HF-200PE)
- RMF – 10 (HF-250PE)
- RMF – 12 (HF-315PE)



\*HVI and Energy-star certified fans



Intertek  
5016009

### AIR SPECIALTIES LTD.

Address: 4 Pine St. ,Toronto  
ON M9N 2Y8  
CANADA

Toll Free: 1.866.890.6457  
1.800.810.3473

# Dismounting diagram

Apply to RMF 4 & 5 Models  
Remove Clamping buckle



Apply to RMF 4 & 5 Models  
Remove Clamping buckle



Apply to RMF 6,8,10 & 12 Models  
Remove clamp



Apply to RMF 6,8,10 & 12 Models  
Remove clamp



The uniquely designed support bracket allows central cartridge to hold the motor and impeller assembly to be fitted or removed without dismantling the duct work.

# Easy to mount

Fix the support



Couple the ducts



Place the fan body

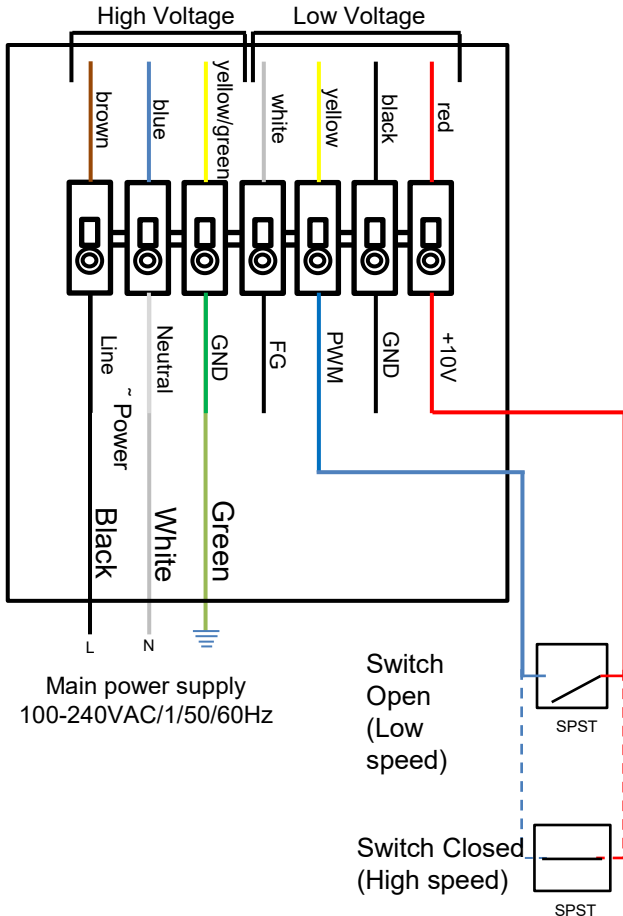


Carry the connections out

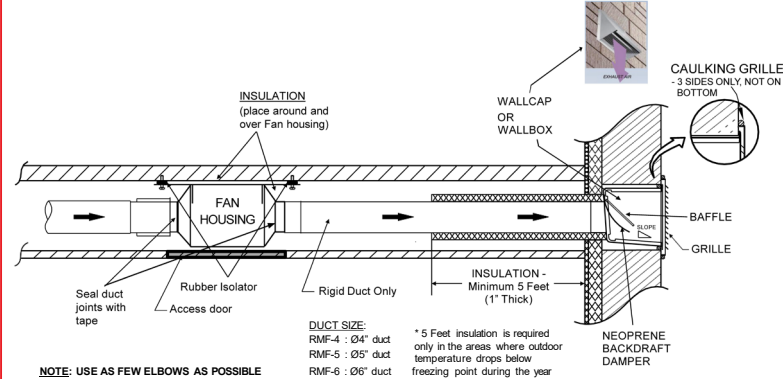


The low profile design for these fans make them the most effective Solution for installations where space is restricted, such as false ceilings.

# Wiring Diagram



# TYPICAL DUCT INSTALLATION



## NOTE:

- "Ducting has a strong effect on the air flow, noise and energy use of the fan. Use the shortest, straightest duct routing possible for best performance, and avoid installing the fan with smaller ducts than recommended. Insulation around the ducts can reduce energy loss and inhibit mold growth. Fans installed with existing ducts may not achieve their rated air flow."
- Ensure duct joints and exterior penetrations are sealed with caulk or other similar material to create an air-tight path and to minimize building heat loss and gain and reduce the potential for condensation.
- Place/wrap insulation around duct and/or fan to in order to minimize possible condensation buildup within the duct, as well as minimize building heat loss and gain.

## **Instructions Manual**

Thank you for your purchase. It has been manufactured following current technical safety regulations and in compliance with electrical code standard. Please read this instructions booklet carefully before installing or starting up the product. It contains important information on personal and user safety measures to be followed while installing, using and carrying out maintenance work on the equipment. Once the product has been installed, please hand in this booklet to the end user.

Check that the apparatus is in perfect condition while unpacking. Any fault or damage caused in origin is covered by the our company guarantee.

Please make sure that the apparatus coincides with the product you have ordered and that the details on the instructions plate fulfill your necessities.

## **Transport and manipulation**

- The packaging used for this apparatus has been designed to support normal transporting conditions. The apparatus must always be transported in its original packaging as not doing so could deform or damage the product.
- The product should be stored in a dry place in its original packaging, protected from dust and dirt until it is installed in its final location. Do not accept delivery if the apparatus is not in its original packaging or shows clear signs of having been manipulated in any way.
- Do not place heavy weights on the packed product and avoid knocking or dropping it.

## **Important information for the safety of installers and user.**

- Installation must only be carried out by qualified persons.
- Make sure that the installation complies with each country's current mechanical and electrical norms.
- Ventilators, or apparatus that include them, have been designed to move the air in the area stipulated on their characteristics plate.
- This apparatus must not be used in explosive or corrosive atmospheres
- If a ventilator is going to be installed to extract air from premises where a boiler or other combustion apparatus are installed, make sure that the building has sufficient air intakes to assure adequate combustion. The extractor outlet must not be connected to a duct used exhaust smoke or fumes from any appliance that uses gas or any other type of fuel.

These fans are not intended for use by young children or infirm persons

## **Safety during installation.**

- Make sure there are no loose elements near the ventilator, as they could run the risk of being sucked up by it. If it is going to be installed in a duct, check that it is clean of any element that could be sucked up by the ventilator.
- When installing an apparatus, make sure that all the fittings are in place and that the structure which supports it is resistant enough to bear its weight at full functioning power.
- Before manipulating the apparatus, make sure the mains supply is disconnected, even if the machine is switched off.
- Check that the mains supply voltage and frequency values coincide with the stipulations on the characteristics plate.
- Please follow the wiring instruction diagram for the electrical connections.
- If an earth connection is necessary, check that it correctly connected and that adequate thermal and overloading protection has been connected and adjusted to the corresponding limits.
- If a ventilator is installed in a duct, the duct must be exclusively for the ventilation system.

## **Starting up**

Before starting up the fan, make sure that:

- The apparatus is well secured and the electrical connections have been carried out correctly.
- The safety devices have been adequately connected.
- No loose material or fitting remains can be sucked up by the ventilator. If the ventilator has been mounted in a duct, make sure it is clear of loose material.
- The earth fittings are adequately connected.
- The electrical safety devices are correctly connected, adequately adjusted and ready for use.
- The wire and electrical connections inputs are correctly sealed and water-tight.

When starting up the fan, make sure that:

- The propeller turns in the correct direction.
- There are no abnormal vibrations.
- If circuit protection device tripping operation, the apparatus must be quickly disconnected from the mains supply. The whole installation should be carefully checked before trying to start up the machine again.

## **Maintenance**

- Before starting maintenance work, make sure the ventilator is disconnected from the mains supply even if it has previously been switched off. Prevent the possibility of anyone else connecting it while it is being manipulated.
- The apparatus must be regularly inspected. These inspections should be carried out bearing in mind the machine's working conditions, in order to avoid dirt or dust accumulating on the propeller, turbine, motor or grids. This could be dangerous and perceptibly shorten the working life of the ventilator unit.
- While cleaning, great care should be taken not to unbalance the propeller or turbine.
- All maintenance and repair work should be carried out in strict compliance with each country's current safety regulations.

## **Recycling.**

Please dispose all left-over material and packaging in their corresponding recycling containers and hand in the replaced machines to the nearest handler of this type of waste product.

If you have any queries about the products, please contact our after-sales service or your local dealer.

For contact information please visit our website [www.reversomatic.com](http://www.reversomatic.com)