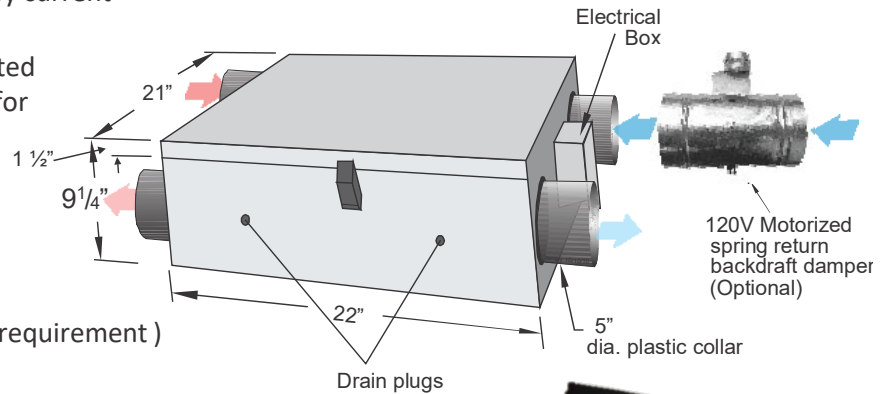




Shop Drawing RHRV-CF100PECM

Features

- Over all size 22" (W) x 21" (D) x 9 1/4" (H)
- Power ratings: 120V / 1 / 60 Hz, 0.70 Amp., Stand by current is 7W only
- High efficiency energy savings permanently lubricated variable speed ECM motors (Thermally protected) for continuous operation
- Hexagonal counter flow core for higher efficiency
- Suitable for horizontal & vertical installation
- Tilted core design for maximum efficiency
- Automatic fan cycled defrost
- Exhaust up to three washrooms (depends on CFM requirement)
- Continuous fresh air supply
- Furnace / Fan-coil / Heat Pump Interlocking relay
- Dual Protection: If exhaust fan fails, the outside fresh-air supply will be closed by shutting off supply motor and the relay contact for motorized damper and interlock will be opened. Fan Coil/Furnace low speed will be stopped and at normal operation no air will enter into the system
- In case of power failure, optional motorized spring return damper stops the fresh air intake and prevent core from freezing
- Weight approximately 35 lbs., 2 years limited warranty on parts

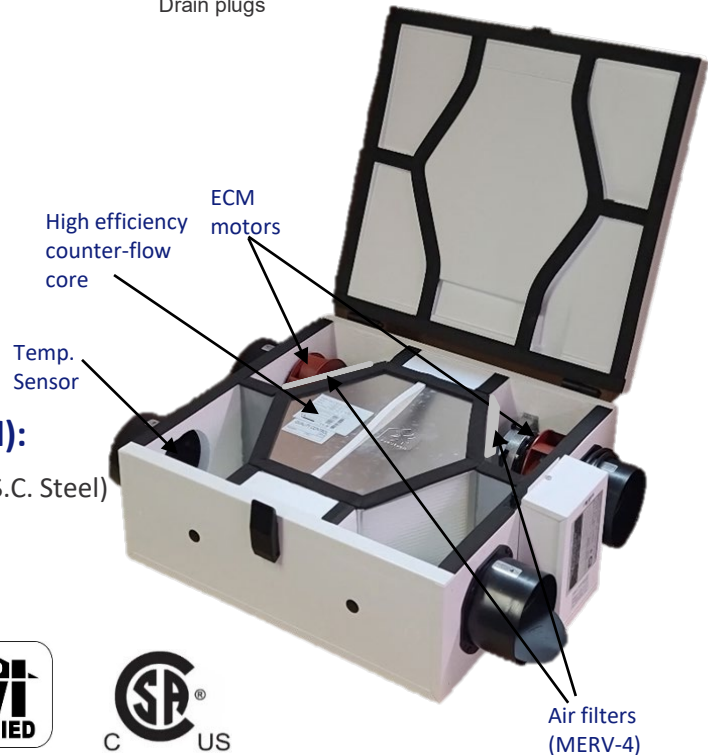


Accessories (Optional):

- Motorized Damper (120V AC)
- Pipe and "T" connector
- Time Delay Switch (120V AC)
- Intermittent Switch (Lo/Hi/int, 5VDC)
- Push button timer switch (20/40/60 Min., 5VDC)
- Filters up to MERV-13

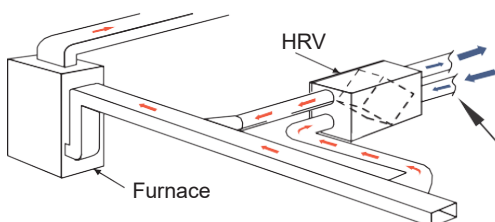
Accessories (Included):

- Mounting brackets (18ga. S.C. Steel)
- Drain Kit

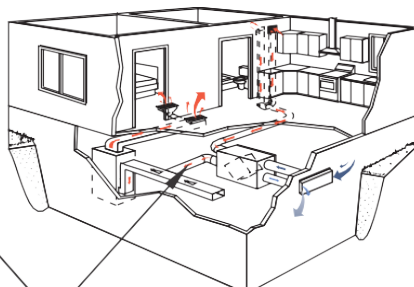


Installation Options for house

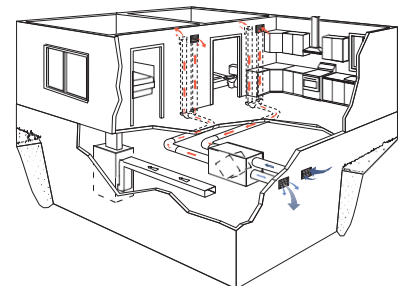
Furnace Return Air-duct Connection



Semi Ducted System



Fully Ducted System



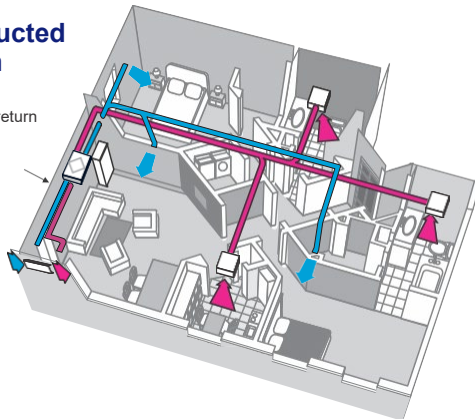
Motorized spring return damper
(Highly Recommended)

Reversomatic Manufacturing Ltd.

Installation Options for High-Rise Condominium

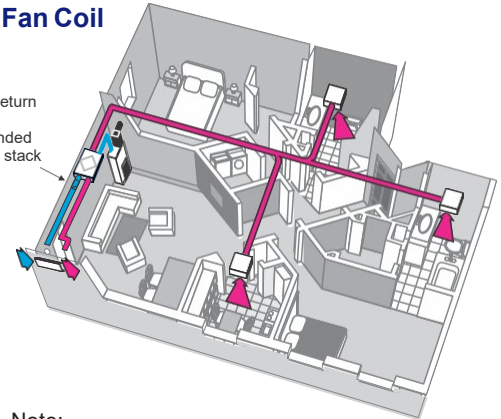
Fully Ducted System

Motorized spring return backdraft damper (Recommended)



HRV with Fan Coil System

Motorized spring return backdraft damper (Highly Recommended due to chimney or stack effect)



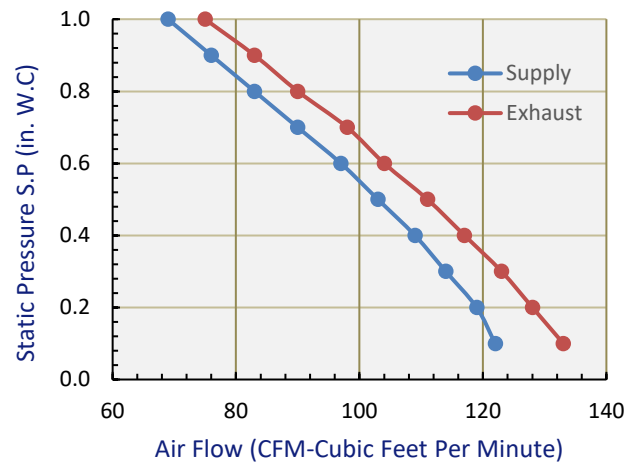
■ FRESH AIR
■ EXHAUSTED AIR

Note:
 - HRV must be connected to drain.

VENTILATION PERFORMANCE

External Static pressure		Net Supply Air Flow		Gross Air Flow			
				Supply		Exhaust	
Pa	in. W.C.	L/s	CFM	L/s	CFM	L/s	CFM
25	0.10	56	120	58	122	63	133
50	0.20	55	116	56	119	61	128
75	0.30	53	111	54	114	58	123
100	0.40	50	106	51	109	55	117
125	0.50	48	101	49	103	52	111
150	0.60	45	95	46	97	49	104
175	0.70	42	88	43	90	46	98
200	0.80	38	81	39	83	43	90
225	0.90	35	75	36	76	39	83
250	1.00	32	67	33	69	36	75

FAN DATA



50 L/s @ 0.2 in. W.C.

1.7 Sones

ENERGY PERFORMANCE

RHRV-CF100PECM		Supply Temperature		Net Airflow		Supply/Exhaust Flow ratio	Average Power (Watts)	Sensible Recovery Efficiency	Apparent Sensible Effectiveness	Net Moisture Transfer
		°C	°F	L/s	CFM					
Heating	I	0	32	30	63.8	1.02	32	82.9	89.5	0%
	II	0	32	37	78.6	1.00	46	80.1	85.8	0%
	III	0	32	43	90.7	1.01	56	78.7	85.0	0%

Contractor:		RHRV-CF100PECM		
Architect:	Job:	Date	Superse.des	Drawing No.
Engineer:	Date Submitted:	2021-08-17		

Reversomatic Manufacturing Ltd.

790 Rowntree Dairy Road, Woodbridge, ON Canada L4L 5V3 • Tel: 905-851-6701 • Fax: 905-851-8376

www.reversomatic.com • info@reversomatic.com