



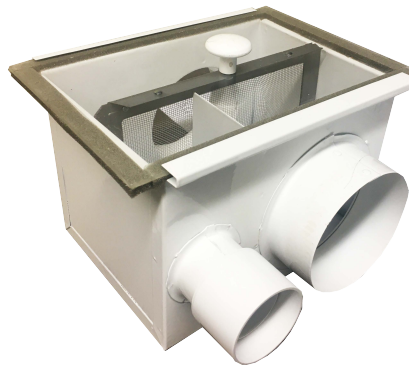
**LINT TRAP - DRYER AND
VACUUM CLEANER COMBO
SURFACE MOUNTED**

LT-250V is equipped with filter frame attached to the removable door for easy operation.

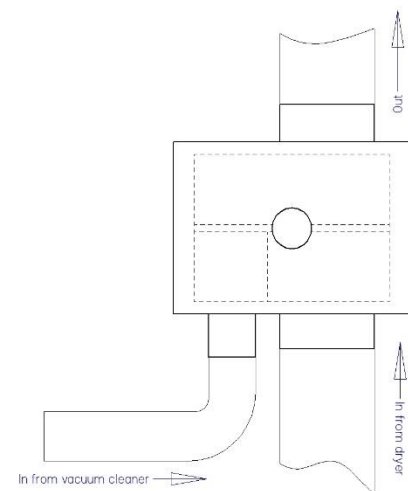
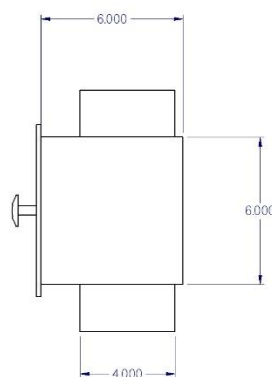
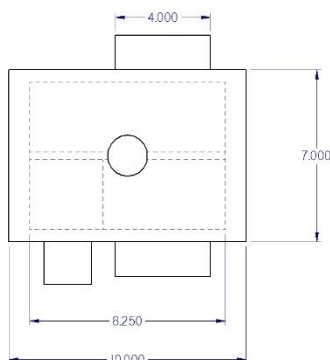
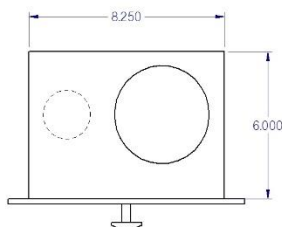
Model LT250V-45 lint trap has 4" dia. inlet for dryer connection and 5" dia. outlet for better performance.

Also available in 4" dia. outlet (Model # LT250V-44).

Please specify when ordering.



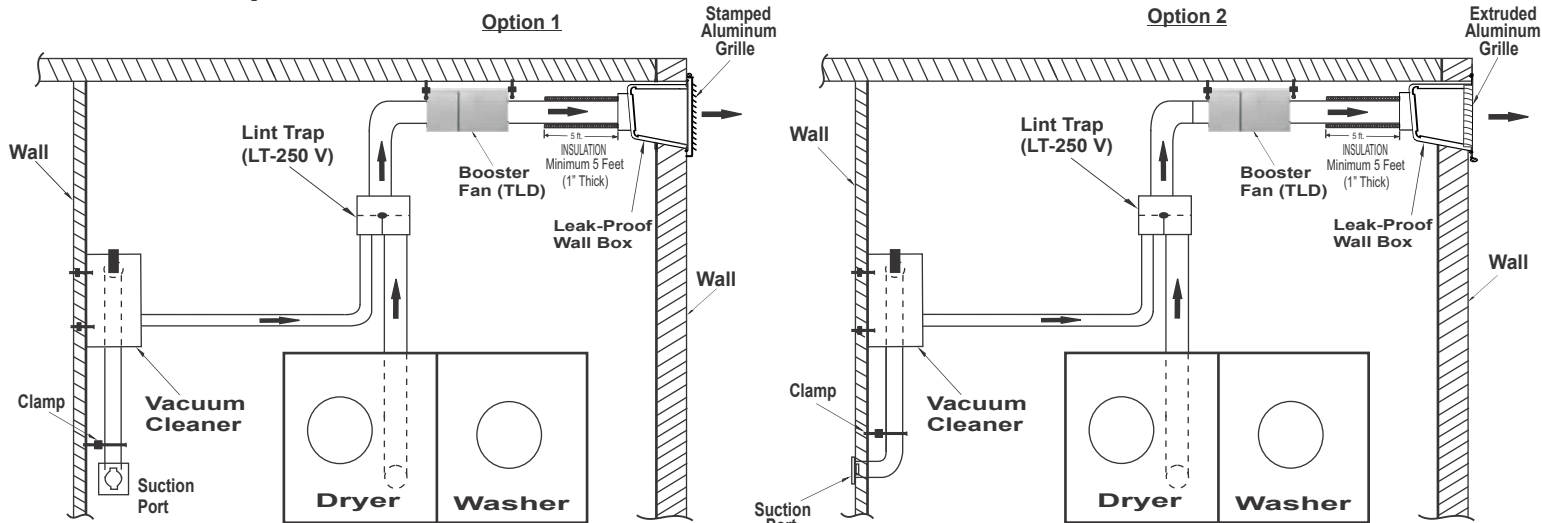
DIMENSIONS:



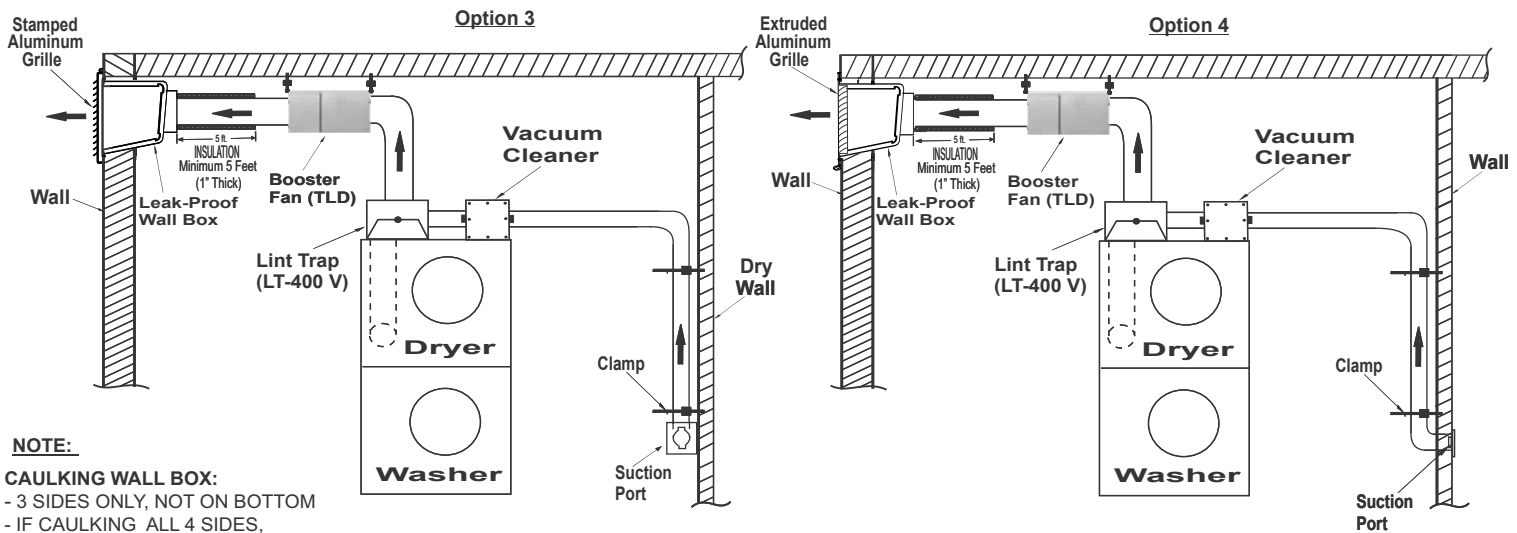
Contractor:		LT-250V		
Architect:	Job:	Date	Supersedes	Drawing No.
Engineer:	Date Submitted:	OCT 09 2019		

INSTALLATION

Installation Options:



“ON” and Dryer must be “OFF”.



NOTE:

CAULKING WALL BOX:
 - 3 SIDES ONLY, NOT ON BOTTOM
 - IF CAULKING ALL 4 SIDES,
 MUST HAVE DRAINING HOLES.

Contractor:		LT-250V		
Architect:	Job:	Date	Supersedes	Drawing No.
Engineer:	Date Submitted:	OCT 09 2019		

Reversomatic Manufacturing Ltd.

790 Rowntree Dairy Road, Woodbridge, ON Canada L4L 5V3 Tel: 905-851-6701 Fax: 905-851-8376
www.reversomatic.com • info@reversomatic.com