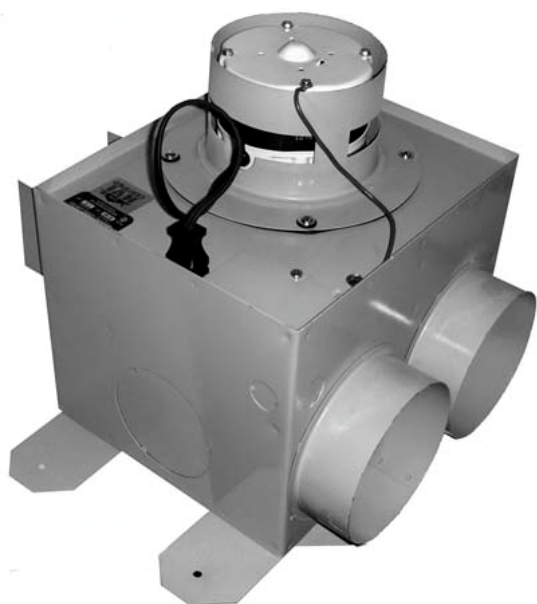




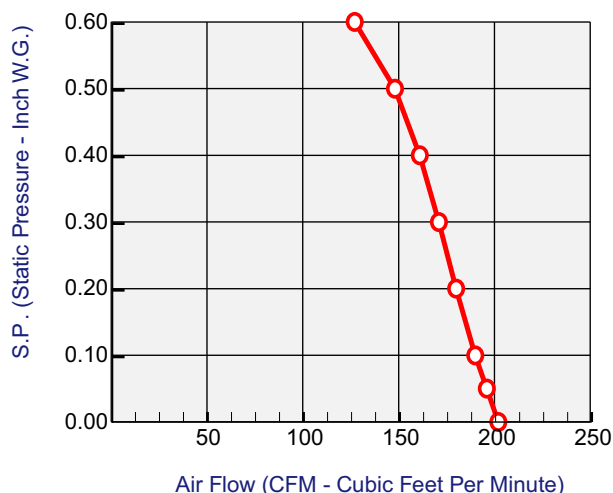
**XL SERIES
BATHROOM AND KITCHEN
EXHAUST INLINE FANS**

The DB-200 model solves ventilation problems. This powerful unit has been equipped with a totally enclosed motor. A squirrel cage impeller capable of exhausting two bathrooms and a kitchen.

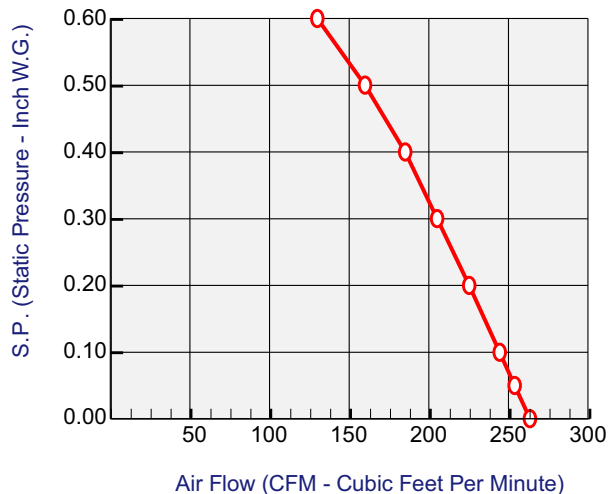
The DK-260 is designed to exhaust kitchens or washrooms when high CFM at high static pressure is required.



DB-200 FAN DATA



DK-260 FAN DATA



ACCESSORIES

Standard:

- Mounting brackets

Optional:

- Balance box
- Transition
- Access door

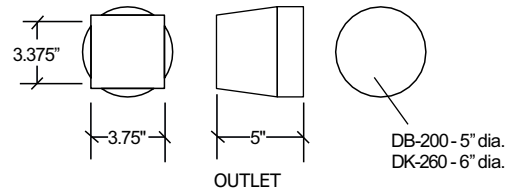
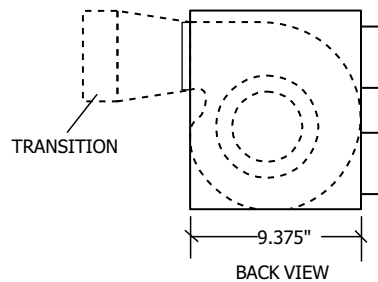
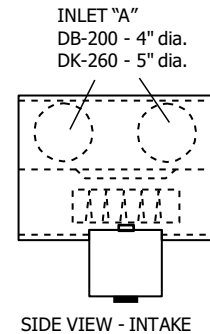
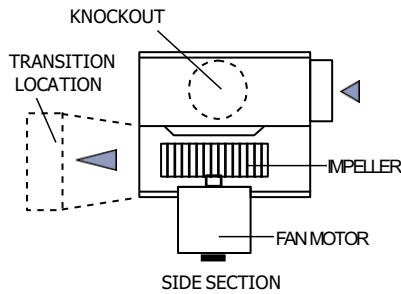
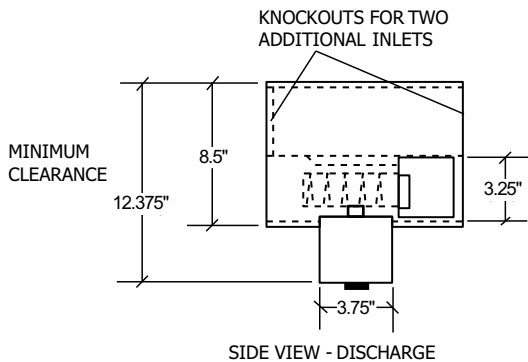
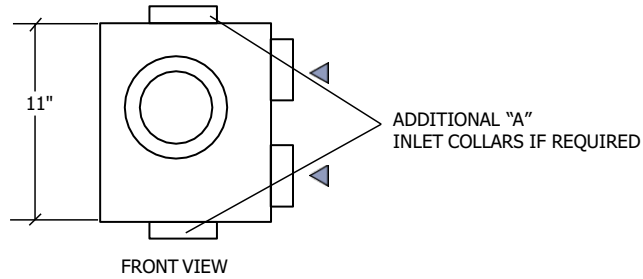


DK-260

Reversomatic Manufacturing Ltd.

790 Rowntree Dairy Road, Woodbridge, ON Canada L4L 5V3 • Tel: 905-851-6701 • Fax: 905-851-8376
www.reversomatic.com • info@reversomatic.com

XL SERIES DB-200, DK-260



HVI CERTIFIED RATINGS

MODEL	CFM @ 0.20" S.P
DK-260	220

FAN DATA

MODEL	MOTOR 120 VAC 60 Hz			CUBIC FEET PER MINUTE							
	RPM	AMPS	S.P	0.00	0.05	0.10	0.20	0.30	0.40	0.50	0.60
DB-200	1550	1.9	CFM	202	196	190	180	171	161	148	127
DK-260	1550	2.3	CFM	263	254	244	225	205	185	160	130

RPM (Revolution Per Minute) shown is nominal and performance is based on actual speed of test. Units were tested with inlet bell, backdraft damper and outlet duct.

Contractor:				DB-200 / DK-260			
Architect:		Job:		Date	Supersedes	Drawing No.	
Engineer:		Date Submitted:		2020/07/07			

Reversomatic Manufacturing Ltd.

790 Rowntree Dairy Road, Woodbridge, ON Canada L4L 5V3 • Tel: 905-851-6701 • Fax: 905-851-8376
www.reversomatic.com • info@reversomatic.com