

**NEW**

**MINI**

**RHRV-80P  
RERV-80**

**HEAT & ENERGY RECOVERY VENTILATORS**



***SENSIBLE CHOICE  
TO IMPROVE  
YOUR INDOOR AIR  
QUALITY &  
HEALTHY LIVING***

- *Slim line compact units*
- *Tilted core design for maximum efficiency*

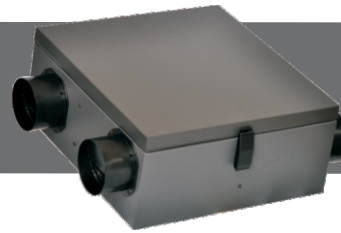


**REVERSOMATIC**  
MANUFACTURING LIMITED

790 Rowntree Dairy Road, Woodbridge, ON Canada L4L 5V3  
Tel: 905.851.6701 Fax: 905.851.8376  
Toll Free: 1.800.810.3473 (Canada) / 1.866.890.6457 (U.S.A.)  
[www.reversomatic.com](http://www.reversomatic.com) • [info@reversomatic.com](mailto:info@reversomatic.com)

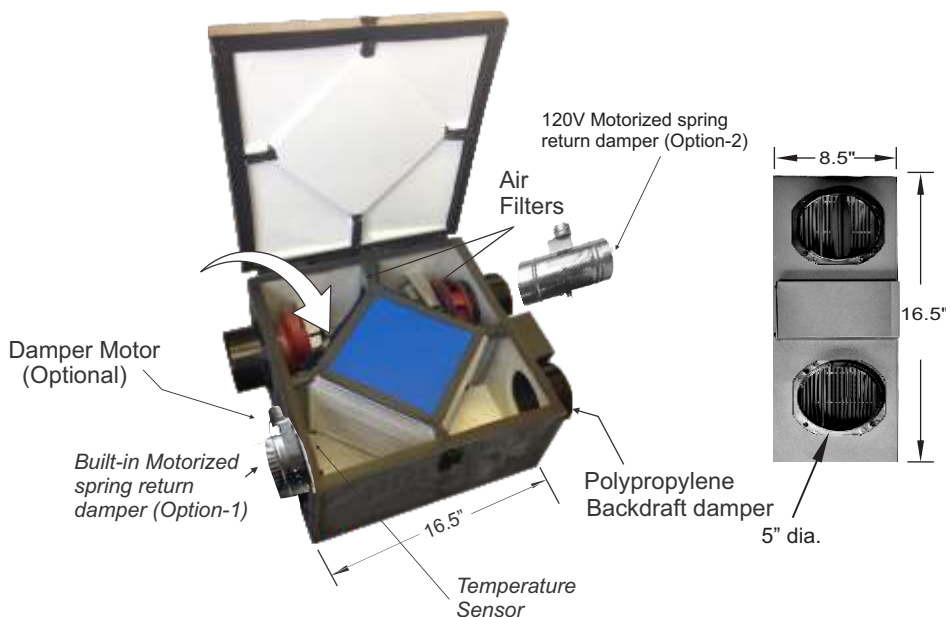
Mini Unit

# RERV-80 RHRV-80P



## FEATURES

- Over all size 16.5" (W) x 16.5" (D) x 8.5" (H)
- Power ratings: 115V / 1 / 60 Hz, 0.70 Amp., Standby current is 7W only
- Washable Enthalpy core and Filters
- **Drainless design**
- High efficiency, energy saving, permanently lubricated, backward inclined, non- over loading, variable speed PSC motors for air balancing
- Suitable for horizontal & vertical installation
- **Tilted core design for maximum efficiency**
- Automatic fan cycled defrost
- Exhaust up to 90 CFM
- Continuous fresh air supply up to 20-60 CFM
- Furnace / Fan-coil / Heat Pump Interlock
- *Dual Protection:* If the exhaust fan fails, the outside fresh-air supply will be closed automatically (by the optional motorized damper) and interlocking relay contact will be opened. Fan Coil/Furnace low speed will be stopped and at normal operation no air will enter into the system.
- Weight approximately 20 lbs.
- 2 years warranty on parts



## SELECT HRV/ERV FOR YOUR CLIMATE ZONE

HRVs are recommended for colder climates.  
ERVs are designed for warm-humid climates with long cooling seasons.



HRV	HRV, ERV (optional)
Severe Conditions	Pacific Conditions
Moderate Conditions	High Humidity
Dry Climate	

U.S. Department of Energy climate zones map

# VENTILATION AND ENERGY PERFORMANCE

## VENTILATION PERFORMANCE

Model #	Normal Speed Supply/Exhaust (Constant Ventilation) @ 50 Pa	High Speed Exhaust (Activated by switch) @ 50 Pa	Maximum Power Rating 120V / 1 / 60Hz
<b>RERV-80</b> (Single Washroom)	20 ~ 60 CFM variable	60 ~ 90 CFM variable	0.75 Amp.
<b>RHRV-80P</b> (Single Washroom)	20 ~ 60 CFM variable	60 ~ 90 CFM variable	0.75 Amp.

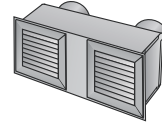
## ENERGY PERFORMANCE

RERV 80		Supply Temperature		Net Airflow		Supply / Exhaust Flow Ratio	Average Power (Watts)	Sensible Recovery Efficiency	Apparent Sensible Effectiveness	Net Moisture Transfer
		°C	°F	L/S	CFM					
Heating	i	0	32	18	38	1.02	30	63	74	0.42
	ii	0	32	22	47	1.02	32	62	70	0.40
	iii	0	32	30	64	1.04	38	58	67	0.36
	iv									
	v	-25	-13							
Cooling	vi	35	95	22	47	1.00	32	33**	62	0.24
	vii	35	95	30	64	0.99	40	29**	58	0.18

RHRV-80P		Supply Temperature		Net Airflow		Supply / Exhaust Flow Ratio	Average Power (Watts)	Sensible Recovery Efficiency	Apparent Sensible Effectiveness	Net Moisture Transfer
		°C	°F	L/S	CFM					
Heating	i	0	32	18	38	1.00	31	74	81	0.01
	ii	0	32	22	47	1.02	33	72	79	0.02
	iii	0	32	30	64	1.02	39	70	74	0.01
	iv									
	v	-25	-13	30	64	1.01	38	55	65	0.01

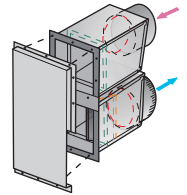
\*\* Indicate Total Recovery Efficiency not Sensible Recovery Efficiency

## ACCESSORIES

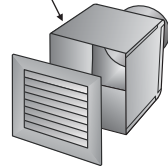


### Double Vent with Extruded Aluminum Grilles (DVG-200)

Exhaust and Intake (DVG-200)  
Optional: Stamped Aluminum Grilles

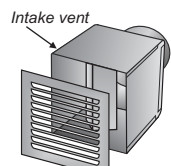


### DVV-100 - Double Vent c/w Vertical Exhaust / Intake hood



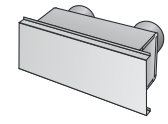
### Single Vent (SVE) with Extruded Aluminum Grille (RSVG100)

Optional: Stamped Grille



### Single Vent (SVI) with Standard Stamped Aluminum Grille

Optional: Extruded Aluminum Grille

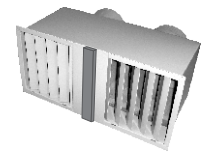


### Double Vent with Side Exhaust / Intake (DVS-100)



### Time Delay Switch (120V AC)

Activates the unit on high speed for 5-30 minutes. Suitable for Superior Series and Compact Units. (TC100-120)



### Double Vent for window panel Exhaust and Intake (DV-200)



### Time Delay Switch (120V AC)

24 Hour Programmable Timer. Suitable for Superior Series and Compact Units. (TC100-120P)



### Electronic Timer Switch (5V DC)

Activates the unit on high speed for 20, 40, 60 minutes. Suitable for Deluxe, Superior & Compact Units. (TC100)

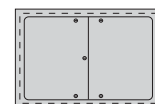


### Motorized Damper

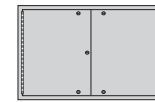
5 inch diameter spring return round damper  
NSPRD024-5 (24V DC) & SPRD110-5 (110V AC)

### Access Doors

#### FLAT - ADF 26



#### PROJECT - ADP 28



#### DETACHABLE - ADD 28



### Intermittent Switch (IC 100-5V)

Low/High/Intermittent/Off mode. In Intermittent mode, HRV/ERV runs for 20 min. in low speed & 40min. OFF. and cycles Continuously. (Also available w/o OFF mode)

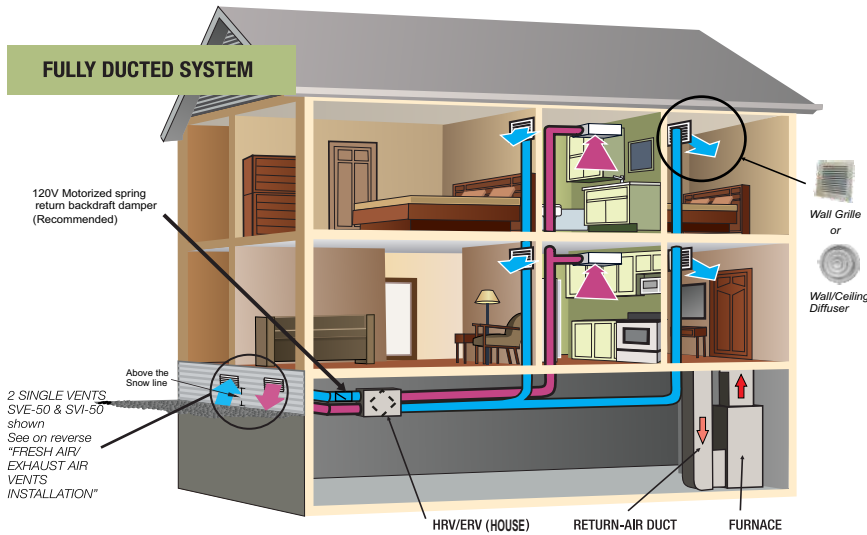


### Dehumidistat

Wall-mount unit allows to control indoor humidity level. Suitable for Superior Series & Compact Units. (RH100)

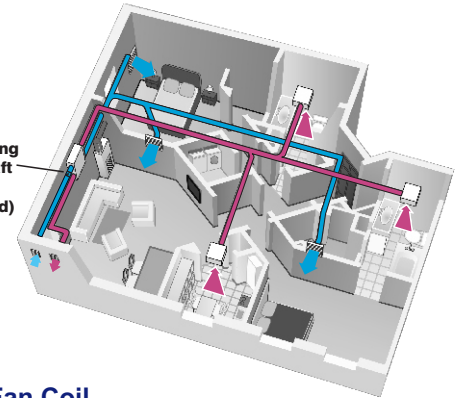
# HEAT & ENERGY RECOVERY VENTILATORS

## FULLY DUCTED SYSTEM



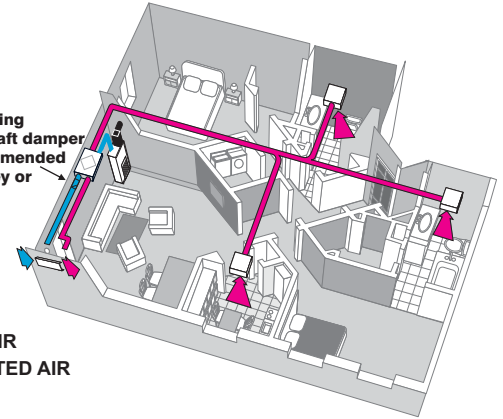
## Fully Ducted System

Motorized spring return backdraft damper (Recommended)



## HRV with Fan Coil System

Motorized spring return backdraft damper (Highly Recommended due to chimney or stack effect)

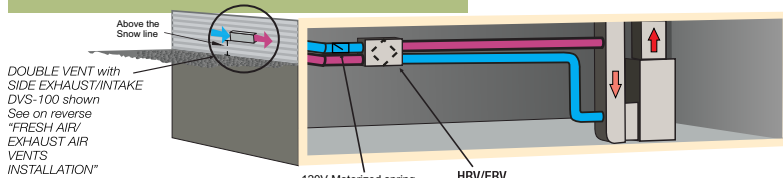


**FRESH AIR**  
**EXHAUSTED AIR**

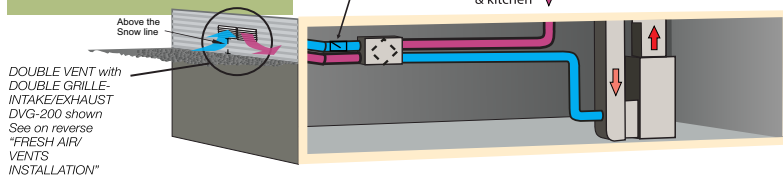
Note:

- HRV must be connected to drain.
- ERV does not required any drain. However, we recommend to connect ERV to drain in areas where extreme cold weather conditions are expected.

## FURNACE RETURN AIR-DUCT CONNECTION



## SEMI DUCTED SYSTEM



**FRESH AIR**      **EXHAUST/STALE AIR**      **HEATED AIR**

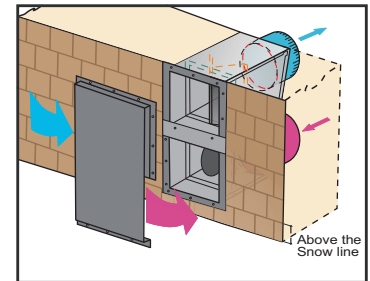
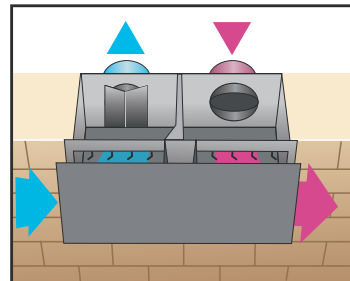
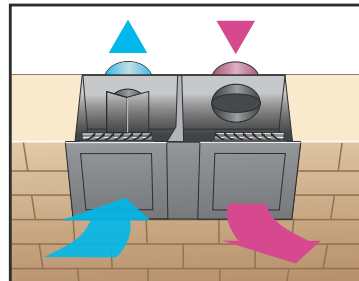
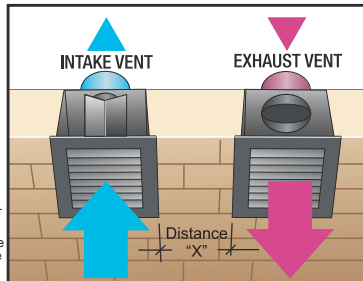
## FRESH AIR / EXHAUST AIR VENTS INSTALLATION

Exhaust (SVE-50) & Intake (SVI-50) vents c/w extruded aluminum grilles  
Re - Circulation Efficiency  
If distance "X" is 5ft - 99.7%  
"X" is 3ft - 96.5%

Double Vent (DVG-200) c/w extruded aluminum grilles  
Re - Circulation Efficiency - 95%

Double Vent (DVS-100) c/w side Exhaust / Intake hood  
Re - Circulation Efficiency - 98%

Double Vent (DVV-100C) c/w vertical Exhaust / Intake hood  
Re - Circulation Efficiency - 98%



All vents are tested @ 400 Pa according to ASTM E547-00 for water Penetration test.  
(tested @ 5-10 mph wind velocity)

**Note: All Exhaust Vents must be installed min. 5 ft away from sidewalls.**

\*Specially designed for Project Condo units.



**REVERSOMATIC**  
MANUFACTURING LIMITED

790 Rowntree Dairy Road, Woodbridge, ON Canada L4L 5V3  
Tel: 905.851.6701 Fax: 905.851.8376  
Toll Free: 1.800.810.3473 (Canada) / 1.866.890.6457 (U.S.A.)  
www.reversomatic.com • info@reversomatic.com