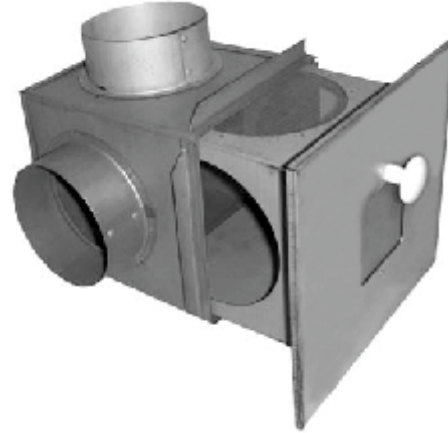


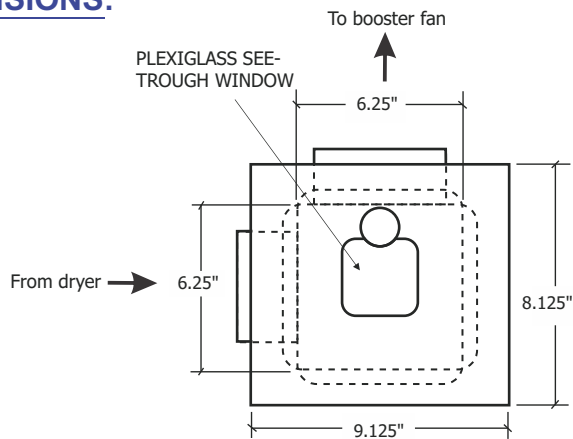


**LINT TRAP
FOR DRYWALL INSTALLATION
(WALL MOUNTED)**

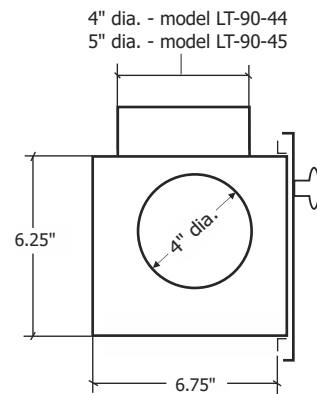
LT-90 lint trap has 4" dia. inlet for dryer connection and 5" dia. outlet - model LT-90-45, 4" dia. outlet - model LT-90-44.
Specify when ordering.



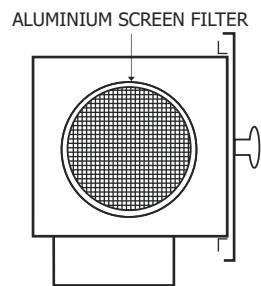
DIMENSIONS:



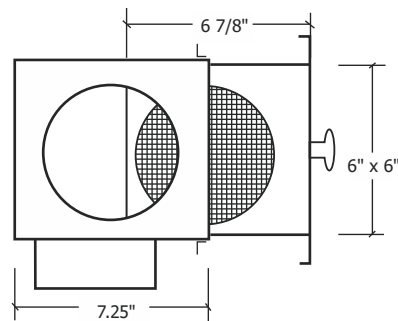
Front view



Left hand side view



Top view



Special sizes are available upon request

Contractor:		LT-90-44, LT-90-45		
Architect:	Job:	Date	Supersedes	Drawing No.
Engineer:	Date Submitted:	2020/07/16		

LINT TRAP

MAINTENANCE AND INSTALLATION INSTRUCTION

Model:

LT-90-44, LT-90-45

LT-180, LT-180F

LT-200-44, LT-200-45

LT-250-45

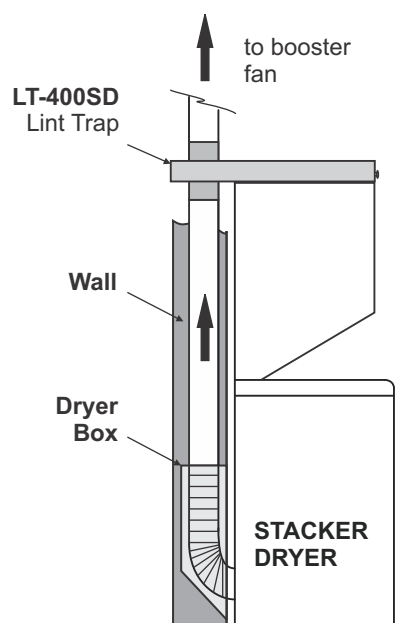
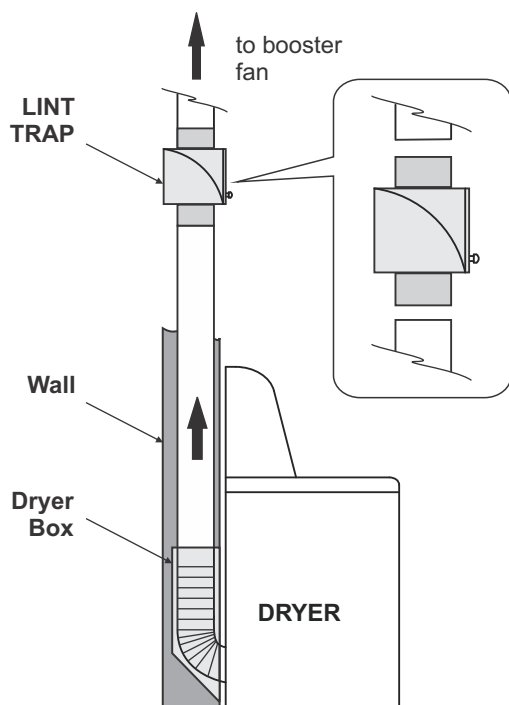
LT-300-44, LT-300-45

LT-400SD

Reversomatic Lint Traps are very straight forward and are very easy to keep clean. All models are cleaned in the same manner.

Remove Lint Trap door, dispose of lint and replace door. It's that easy!

Lint Traps should be checked periodically. Normally this should be done on a monthly basis, but it depends on how frequently the dryer is used and the load being washed. As user gets accustomed to the Lint system, the user can judge best how often to clean the Lint Trap.



REVERSOMATIC
MANUFACTURING LIMITED

790 Rowntree Dairy Road, Woodbridge ON, Canada L4L 5V3
Tel: 905-851-6701 • Fax: 905-851-8376 • info@reversomatic.com

www.reversomatic.com