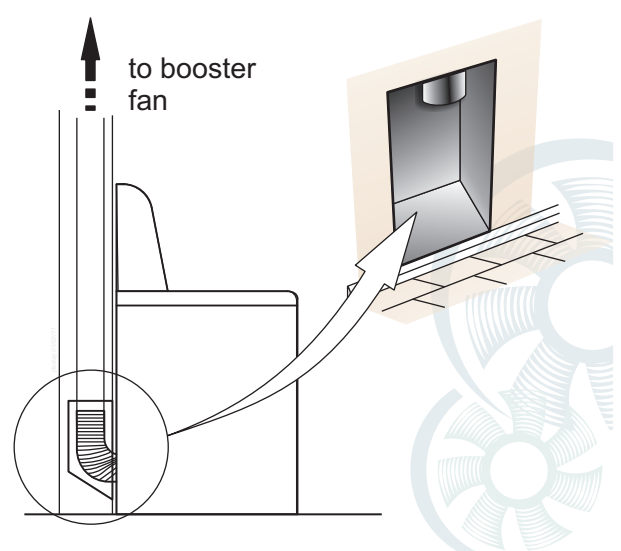
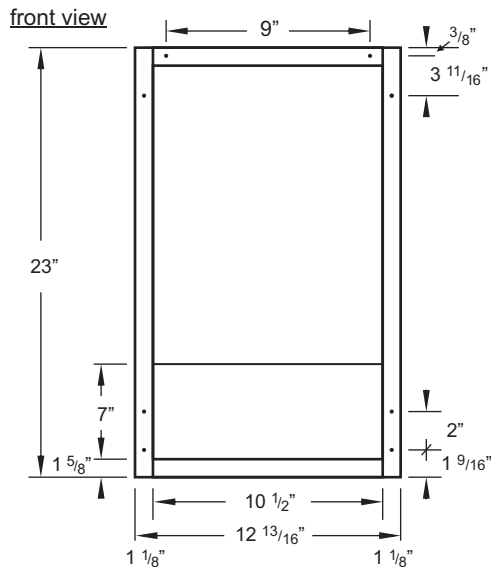
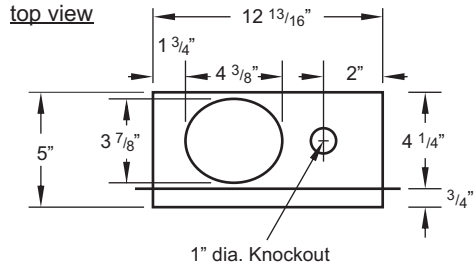




Reversomatic Dryer-box allows the dryer to be located closer to the wall and protects the dryer flexible exhaust duct from getting kinked. It also improved dryer efficiency by reducing one 90° elbow from the dryer exhaust system.



DIMENSIONS:



Contractor:		DRYER-BOX		
Architect:	Job:	Date	Supersedes	Drawing No.
Engineer:	Date Submitted:			