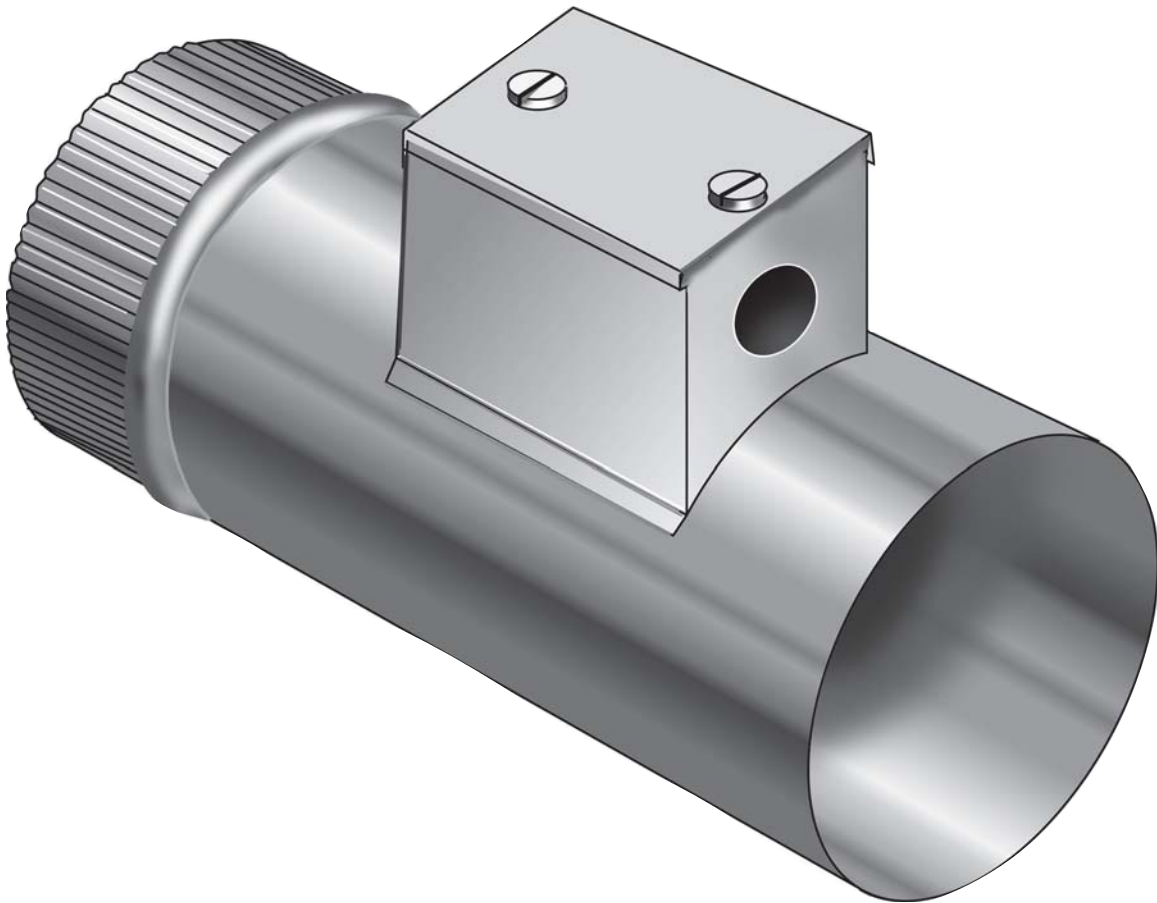


# REVERSOMATIC

## DRYER BOOSTER FAN HEAT SENSOR



### INSTALLATION INSTRUCTIONS

**TURN POWER OFF AT CIRCUIT BREAKER OR FUSE PANEL.**

1. Disconnect dryer vent pipe. Dryer back access panel may need to be removed to install Heat Sensor.
2. Connect Heat Sensor pipe to the dryer and the dryer vent pipe as shown in drawing on reverse side.
3. Connect Heat Sensor to booster fan and 120V AC supply as shown in diagram on reverse side.

**NOTE:**

*Installation by a licensed electrician is recommended. Installation and use of this equipment should be in accordance with provisions of the national electrical code. Applicable local codes and pertinent industry standards should be verified before installation.*

**Reversomatic Mfg. Ltd.**

790 ROWNTREE DAIRY ROAD ▪ WOODBRIDGE, ONTARIO, CANADA L4L 5V3 ▪ PHONE (905) 851-6701 ▪ FAX (905) 851-8376

# REVERSOMATIC

## DRYER BOOSTER FAN HEAT SENSOR

### Model DHB 100

**NOTE:**

Booster Fan will operate only if temperature in dryer vent pipe is 90°F minimum

